

---

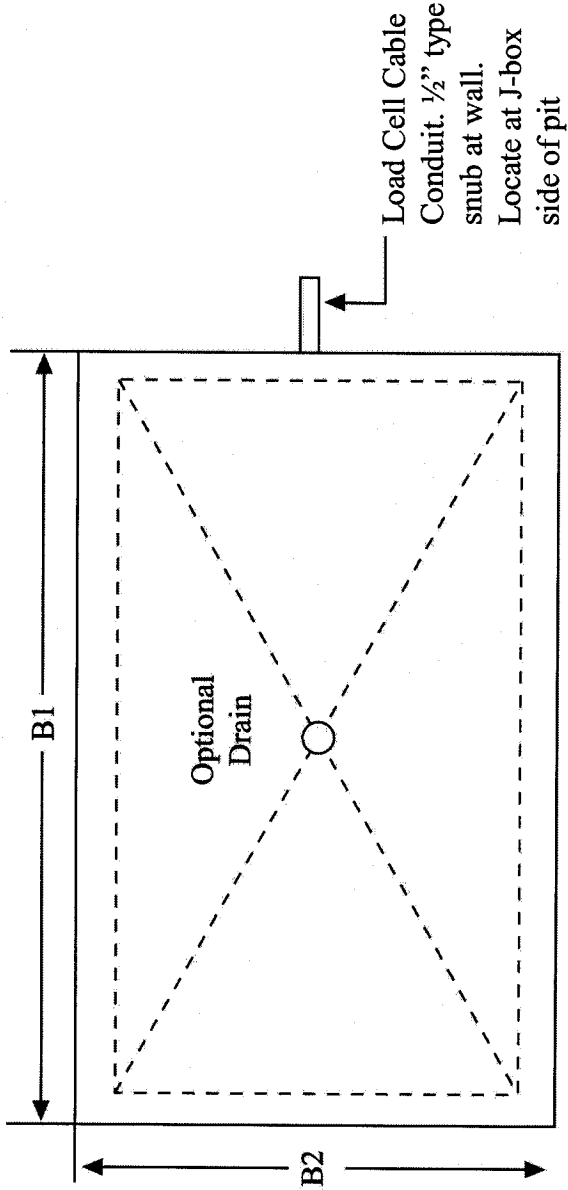
**Installation instructions  
for  
Pitbuilder Frame and Retainers.**

---

The frame consists of angle iron pit coping and concrete anchors. It is supplied fully assembled and accompanied by four baseplate foot retainers for the pit floor.

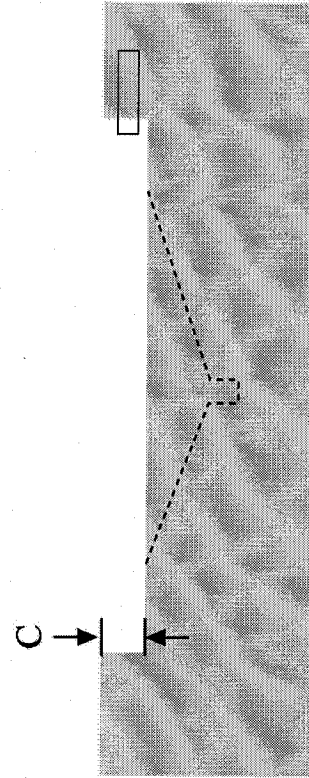
\*Proceed as follows:

- (1) Excavate pit opening according to pit drawing.
- (2) Suspend frame over opening with boards and wire. Level to 0', no error is acceptable.
- (3) Float concrete to bottom of corner base plates.  
Trowel concrete around frame and level with floor.
- (4) Provide for drainage if necessary.
- (5) Provide conduit to exit scale cable from one pit wall to indicator location.
- (6) Wait 24 Hours for concrete to set-up and cure.
- (7) Drop scale into pit to check level. Adjust scale feet up or down to make deck and floor the same height to provide a smooth approach. Snake scale cable into conduit during the final positioning of the scale platform.
- (8) Deck should be on same plane as pit coping and should be approximately 3/8" clearance all around.
- (9) Refer to scale installation instructions for wiring code to indicator.



Plan View

| Platform Size | Scale Capacity | B1 | B2  | C     |
|---------------|----------------|----|-----|-------|
| 3' X 3'       | 10K            | 46 | 46  | 3.75" |
| 4' X 4'       | 10K            | 58 | 58  | 3.75" |
| 4' X 5'       | 10K            | 58 | 70  | 3.75" |
| 4' X 6'       | 10K            | 58 | 82  | 3.75" |
| 5' X 5'       | 10K            | 70 | 70  | 3.75" |
| 5' X 7'       | 10K            | 70 | 94  | 4.75" |
| 5' X 7'       | 20K            | 70 | 94  | 4.75" |
| 6' X 6'       | 20K            | 82 | 82  | 4.75" |
| 6' X 8'       | 20K            | 82 | 106 | 4.75" |



Elevation View

- 1) Four level foot pads required if floor is sloped for drain. N/A if floor is level
- 2) Option #3 - pit frame and anchors.  
(Refer to pit frame instructions.)
- 3) Option #4 - Scale arranged for pit.  
(See catalog for description)